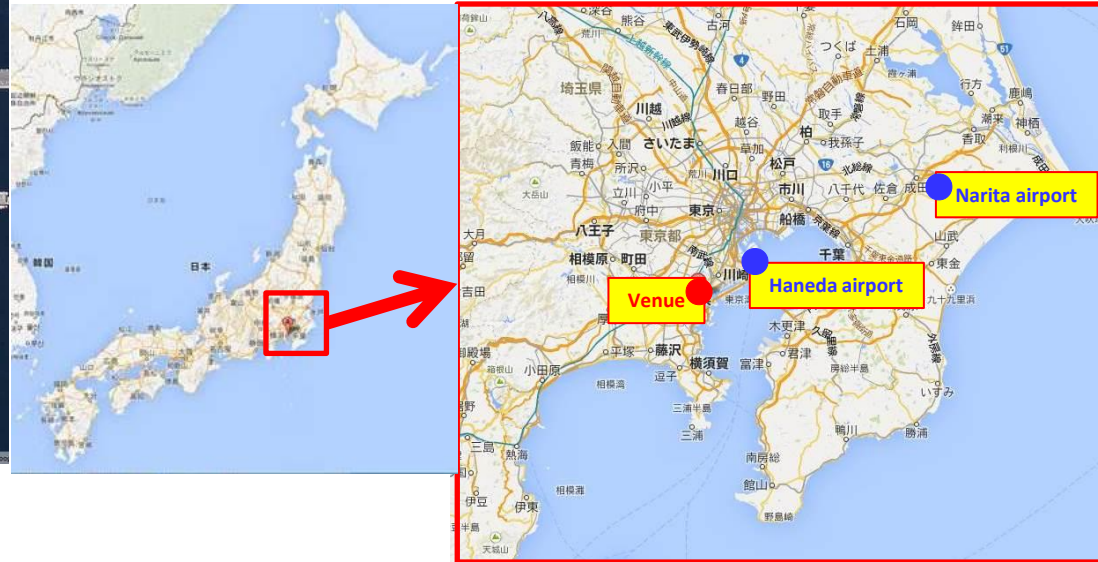
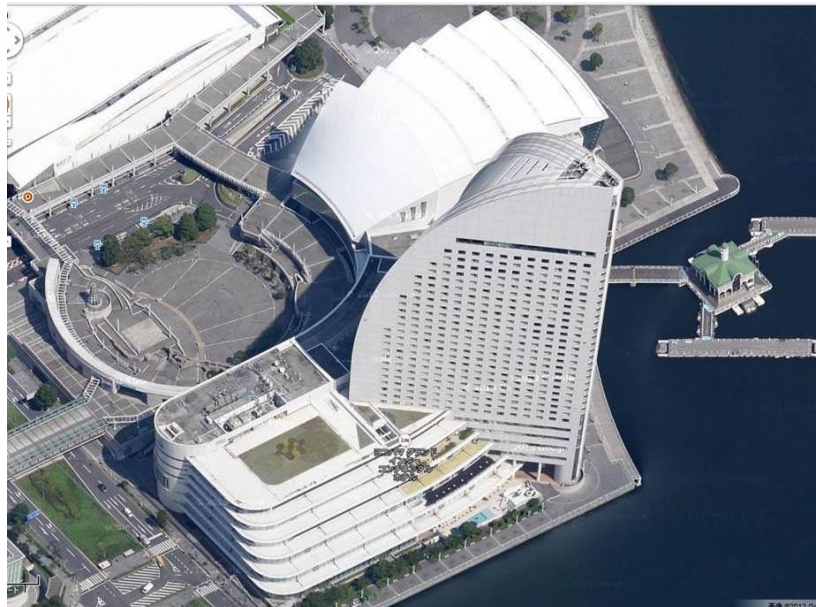


Venue of ICOPE2015 Pacifico Yokohama

2015/11/30~12/3



<p>▶ Annex Hall</p> <p>Large Meeting Rooms 1,350m² Room Height 5.4~6.7m Flooring Carpet tile Wall Fabric-covered acoustical panels Weights 500kg/m²</p>	<p>▶ Exhibition Hall</p> <p>Area 20,000m² Column Free Hall A 3,300m² Hall B 6,700m² Hall C 3,300m² Hall D 6,700m² Room Height 13~19m Flooring Concrete loading 5t/m² Business Center, Restaurant Convenience Store</p>	<p>▶ Inter Continental YOKOHAMA GRAND</p> <p>Guest Room 600 rooms take in 1,200 people 1F - 3F Banquet Room x 12 30F Dining Salon x 6 Restaurant • Lounge x 9</p>
---	--	---



<p>▶ Outdoor</p> <p>Rinko Park Glass Square, Shioiri-no-Ike Koryu Zone Plaza, Convention Hall Terrace Pukari Pier Waiting Area, Restaurant Sea Bass Terminal</p>	<p>▶ National Convention Hall of Yokohama</p> <p>5,002 seats 1F 3,260 seats 2F 994 seats 3F 748 seats Super Vision (LED) Simultaneous Interpreting to meet 8 channels Marine Lobby 1,400m²</p>	<p>▶ Conference Center</p> <p>Main Hall 1,004 seats Room 301~304 1,365m² Room 501+502 792m² Self Operated Business Center</p>
--	---	---

Good access from airports

<from Narita airport>

- Direct JR express from Narita airport
(100minutes, 23 services a day to Yokohama Station)

<from Haneda airport>

- Direct Bus connection from Haneda airport
(50 minutes, 18 services to Pacifico Yokohama)

Many international hotels locate near venue

Biggest china town in Japan is near venue

<http://www.pacifico.co.jp/english/index.html>